



A FINEST VISION OF YOUR DREAM HOME

AN EXQUISITE & ...EXCLUSIVE HAVEN

Welcome to Calachi Icon, meticulously designed apartments and commercial spaces epitomize sophistication and comfort. Catering to residents of all ages, Calachi Icon offers unparalleled residential facilities with a vision to create the ideal space to harmonize with your lifestyle.

Discover a new definition of grandeur living at Calachi Icon.



PREMIUM LOCATION



Nestled within the premium, gated community of Calachi Housing Society, just steps away from schools, hospitals, and shopping malls.



DISCOVER A NEW DEFINITION



OF GRANDEUR LIVING



CITY LIVING MEETS... CONTEMPORARY LUXURY

A cutting-edge apartment tower with three-side accessibility, where every unit enjoys stunning vistas. Its ground floor is a bustling commercial hub, seamlessly integrating convenience and modern living.

This architectural gem promises a dynamic urban lifestyle and redefines the synergy between residential and commercial spaces.





UNFORGETTABLE FIRST IMPRESSION GRAND RECEPTION LOBBY

This meticulously designed space seamlessly blends aesthetics with functionality, serving as a welcoming hub where guests are greeted with impeccable service and a warm ambiance. With its meticulous attention to detail and tasteful decor, the grand reception lobby sets the stage for an exceptional experience from the moment one steps through its doors.



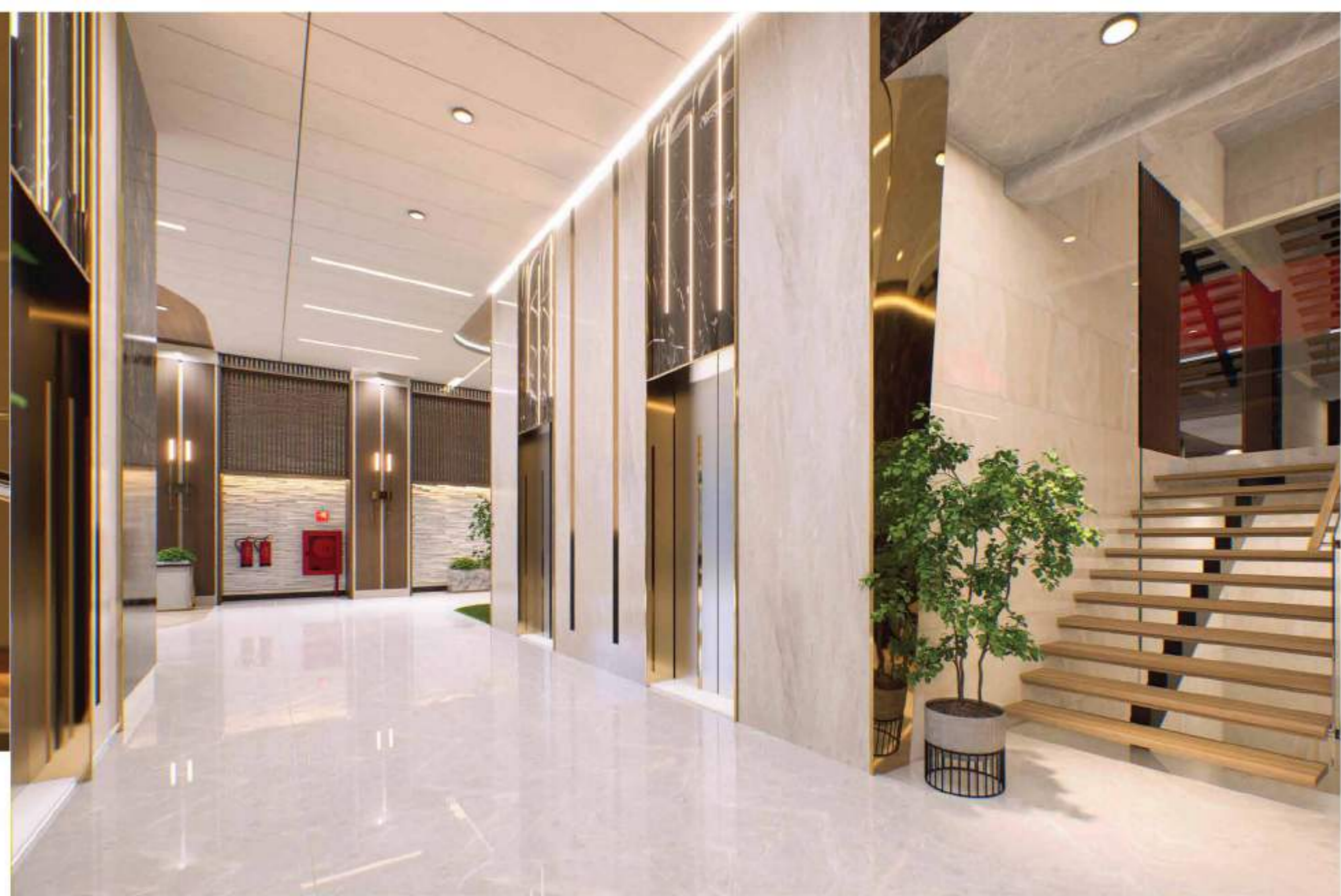
SPACIOUS WAITING AREA

A grand reception waiting area is a plush sanctuary where guests can unwind in comfort and style while anticipating their appointments or engagements.



EXPANSIVE ELEVATOR LOBBY

The glass capsule lift offers a breathtaking ascent, providing passengers with unparalleled panoramic views of the cityscape as they rise through, transforming the act of traveling between floors into a captivating visual experience.





LUXURY LIVING & AN ICONIC MARVEL

Calachi Icon stands as a testament to modern luxury, offering residents a unique vantage point to embrace the city's vibrant energy. With its sleek design and panoramic windows, it redefines urban living, providing an unparalleled connection between home and metropolis. Experience the epitome of cosmopolitan living in this iconic tower.



LOUNGE AREA
EXPERIENCE UNMATCHED LIVING



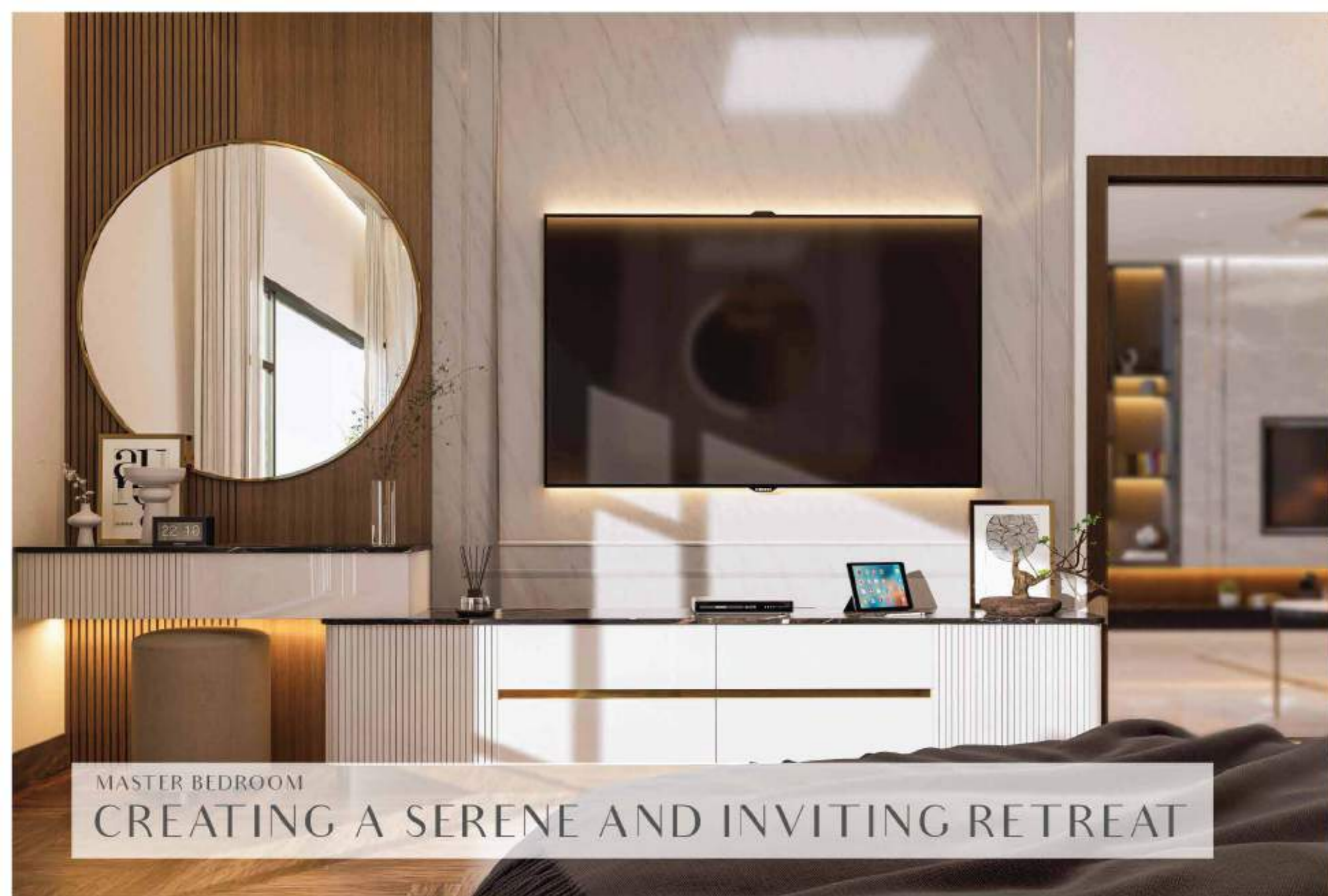
A contemporary open space lounge is a sleek fusion of minimalist design and functionality, featuring clean lines, muted color palettes, and creative lighting. It's a space for social interaction and relaxation, creating an inviting atmosphere where style meets comfort.



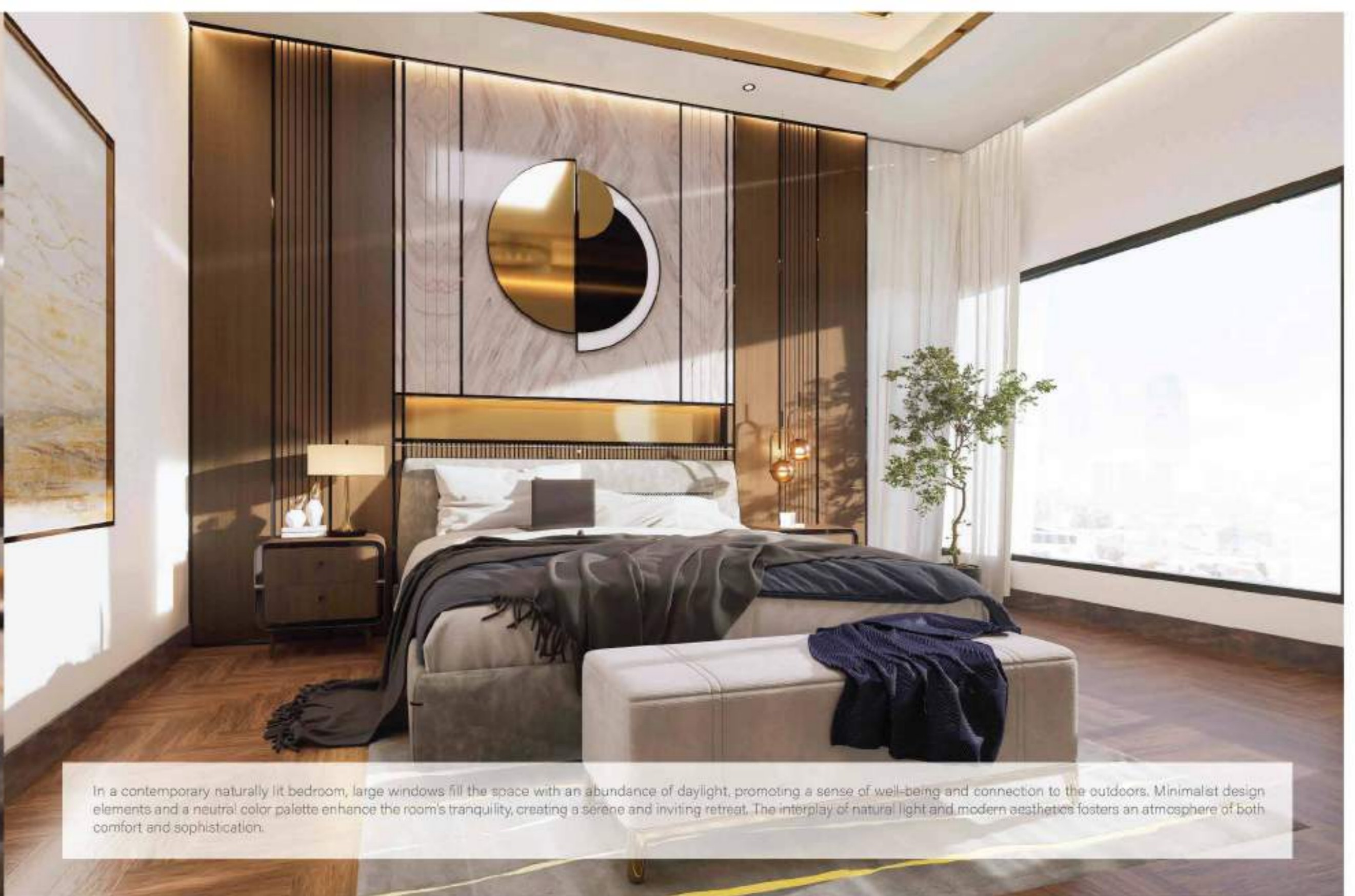
DINING AREA
CULINARY ENJOYMENT IN A STYLISH AMBIANCE



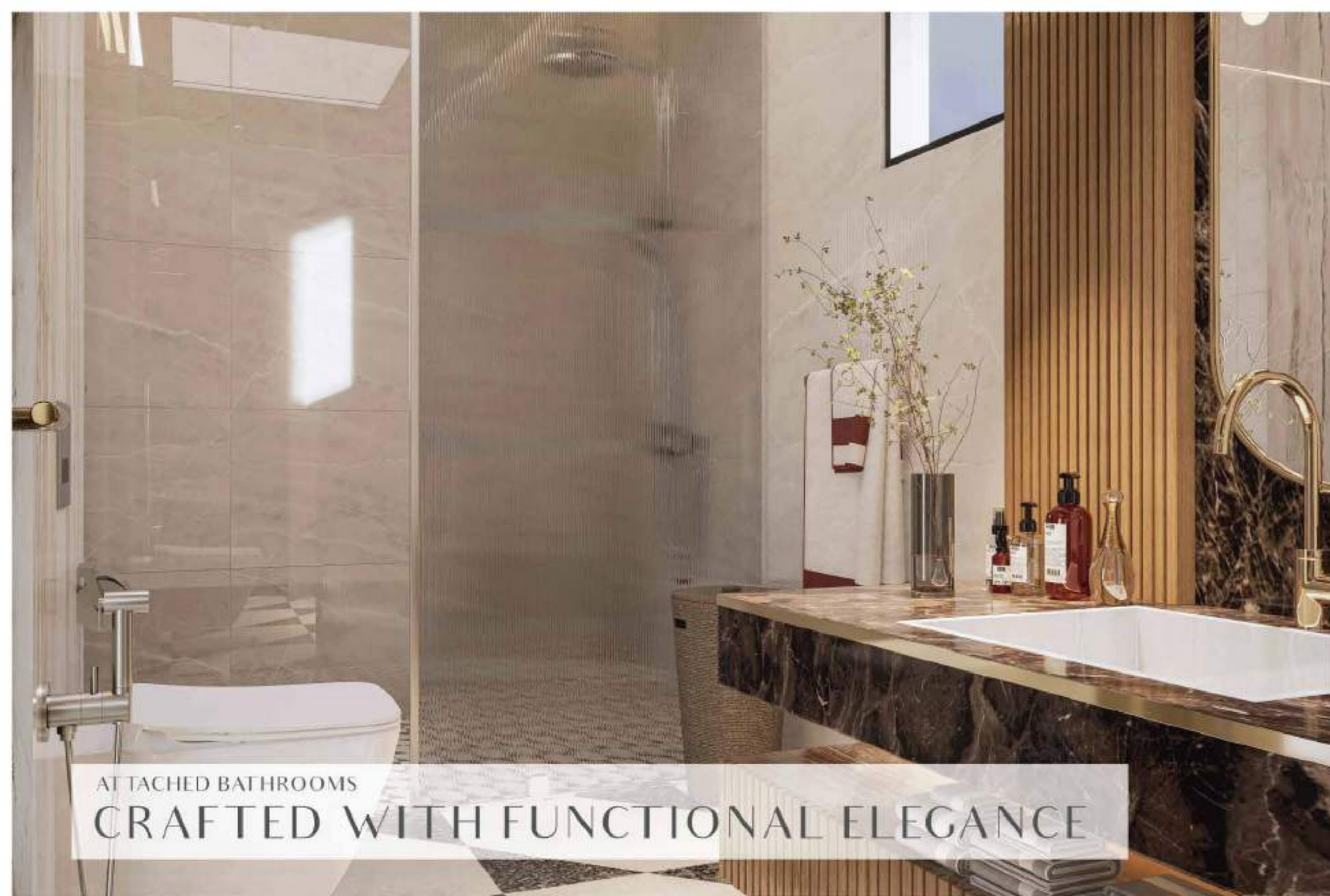
STYLISH KITCHEN
WITH A SENSE OF MODERN ELEGANCE



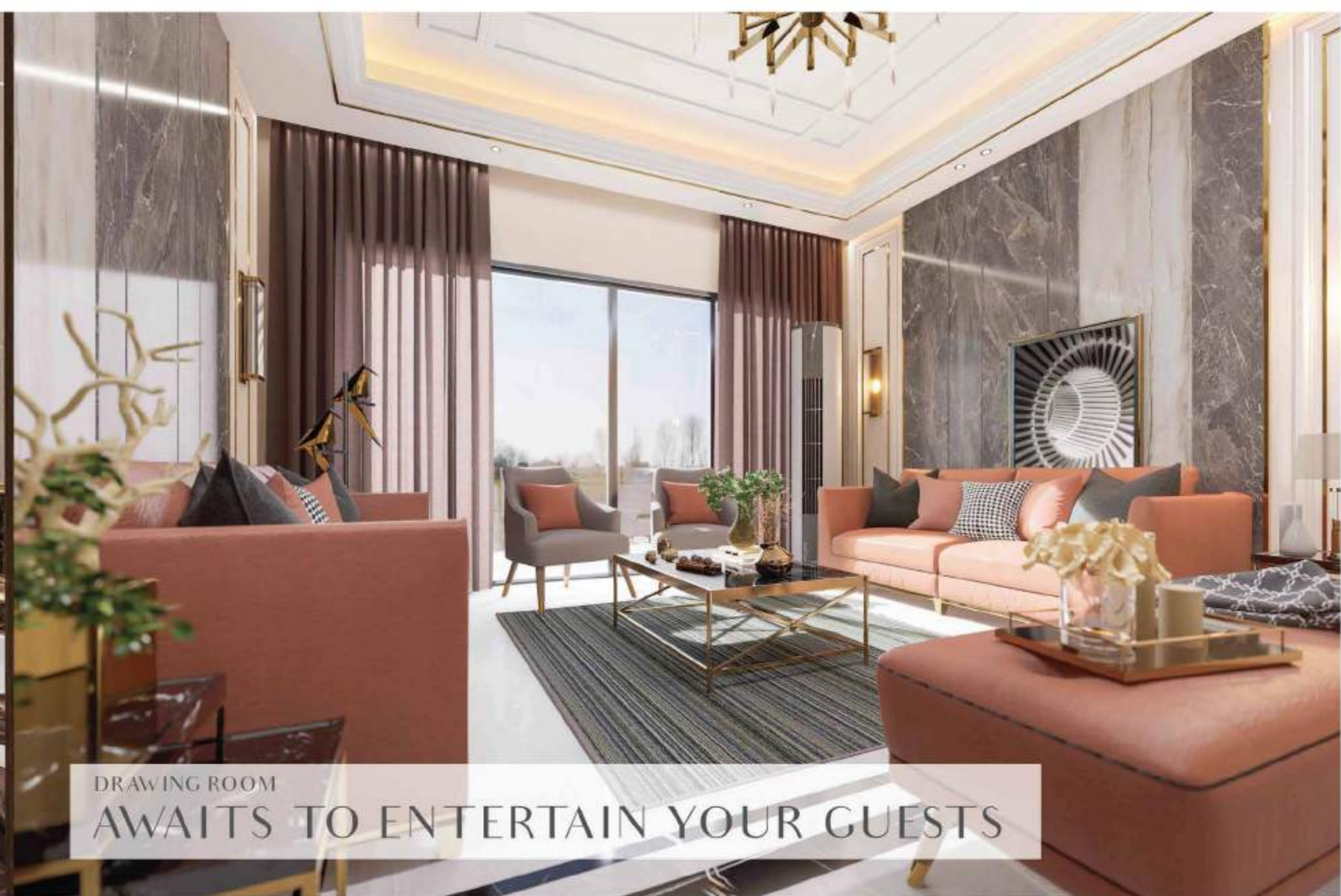
MASTER BEDROOM
CREATING A SERENE AND INVITING RETREAT



In a contemporary naturally lit bedroom, large windows fill the space with an abundance of daylight, promoting a sense of well-being and connection to the outdoors. Minimalist design elements and a neutral color palette enhance the room's tranquility, creating a serene and inviting retreat. The interplay of natural light and modern aesthetics fosters an atmosphere of both comfort and sophistication.



ATTACHED BATHROOMS
CRAFTED WITH FUNCTIONAL ELEGANCE



DRAWING ROOM
AWAITS TO ENTERTAIN YOUR GUESTS



AN URBAN ESCAPE WITHIN HOME

A garden space nestled in the heart of an apartment project serves as an urban oasis, offering residents a lush escape from the city's hustle and bustle. This green enclave provides a serene environment for relaxation, social gatherings, and a connection to nature, enhancing the overall quality of living within the development.





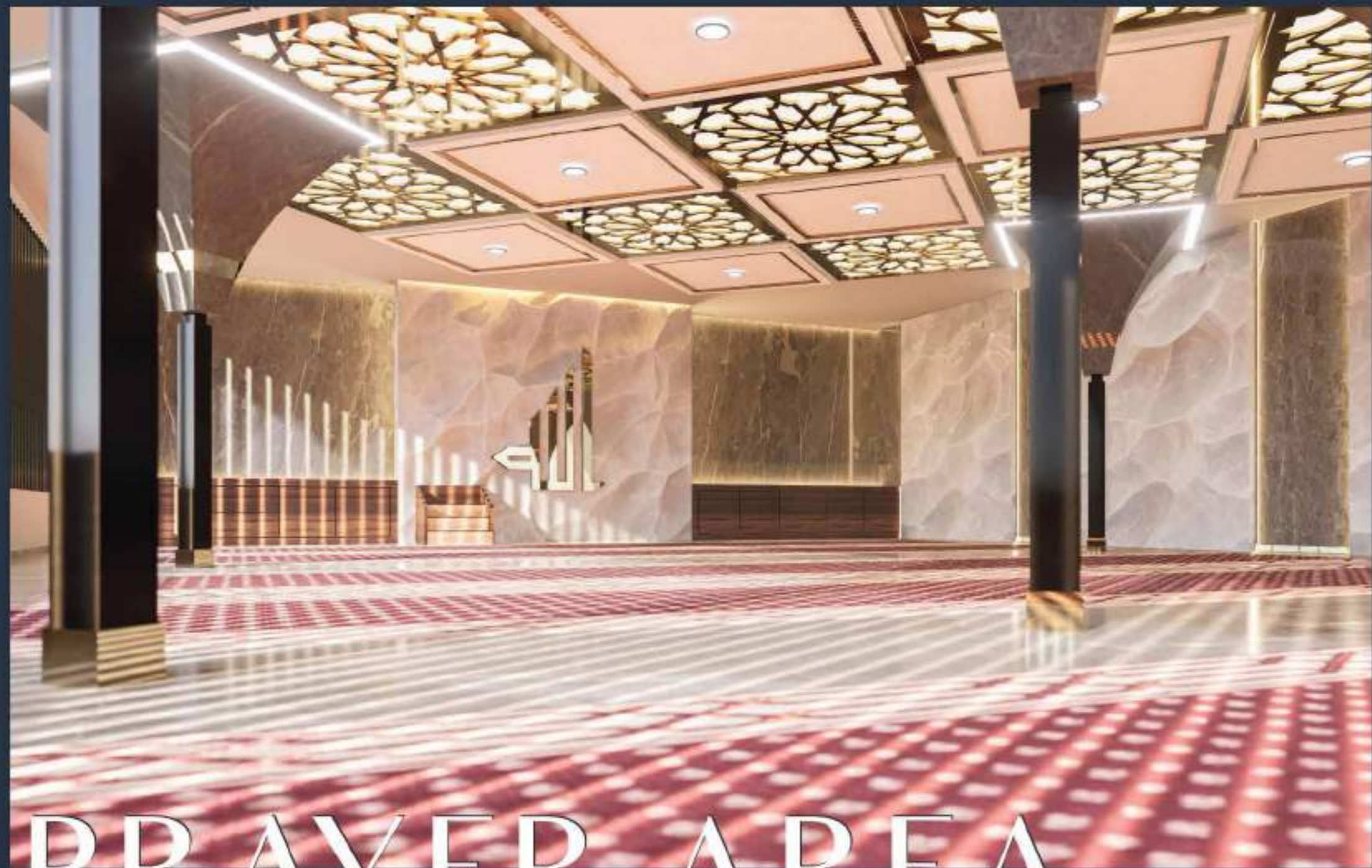
GYMNASIUM

A well-equipped gym boasts a comprehensive selection of state-of-the-art exercise equipment, ensuring you have everything they need for effective workouts.

WORLD-CLASS AMENITIES & SERVICES

These amenities go beyond the ordinary, seamlessly integrating cutting-edge technology, opulent materials, and meticulous attention to detail. They create an immersive and indulgent experience, leaving guests and residents with lasting memories of unparalleled quality and sophistication.

With a commitment to exceeding expectations, world-class amenities and services elevate the standard of hospitality and living, ensuring an unforgettable, refined, and unparalleled experience.



PRAYER AREA

Thoughtfully designed to provide solace and connection for individuals seeking spiritual reflection and devotion.



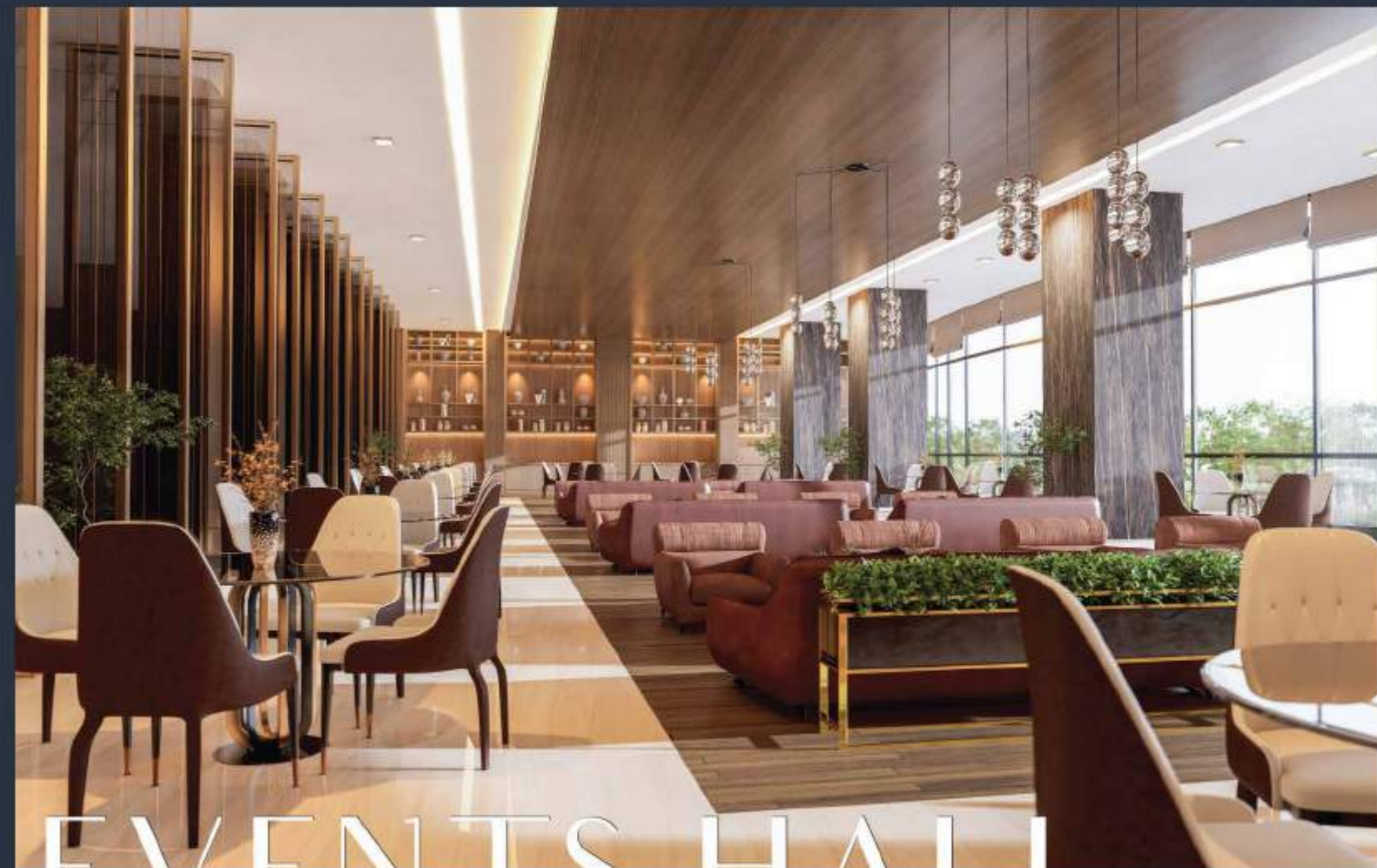
SWIMMING POOL

Whether for exercise or leisure, it's a place where the stresses of the day can effortlessly float away.



KIDS PLAY AREA

A vibrant and imaginative space, where laughter and boundless energy abound as children explore, learn, and make cherished memories. Its colorful equipment and safe surroundings inspire endless adventures and foster social interaction among young ones.

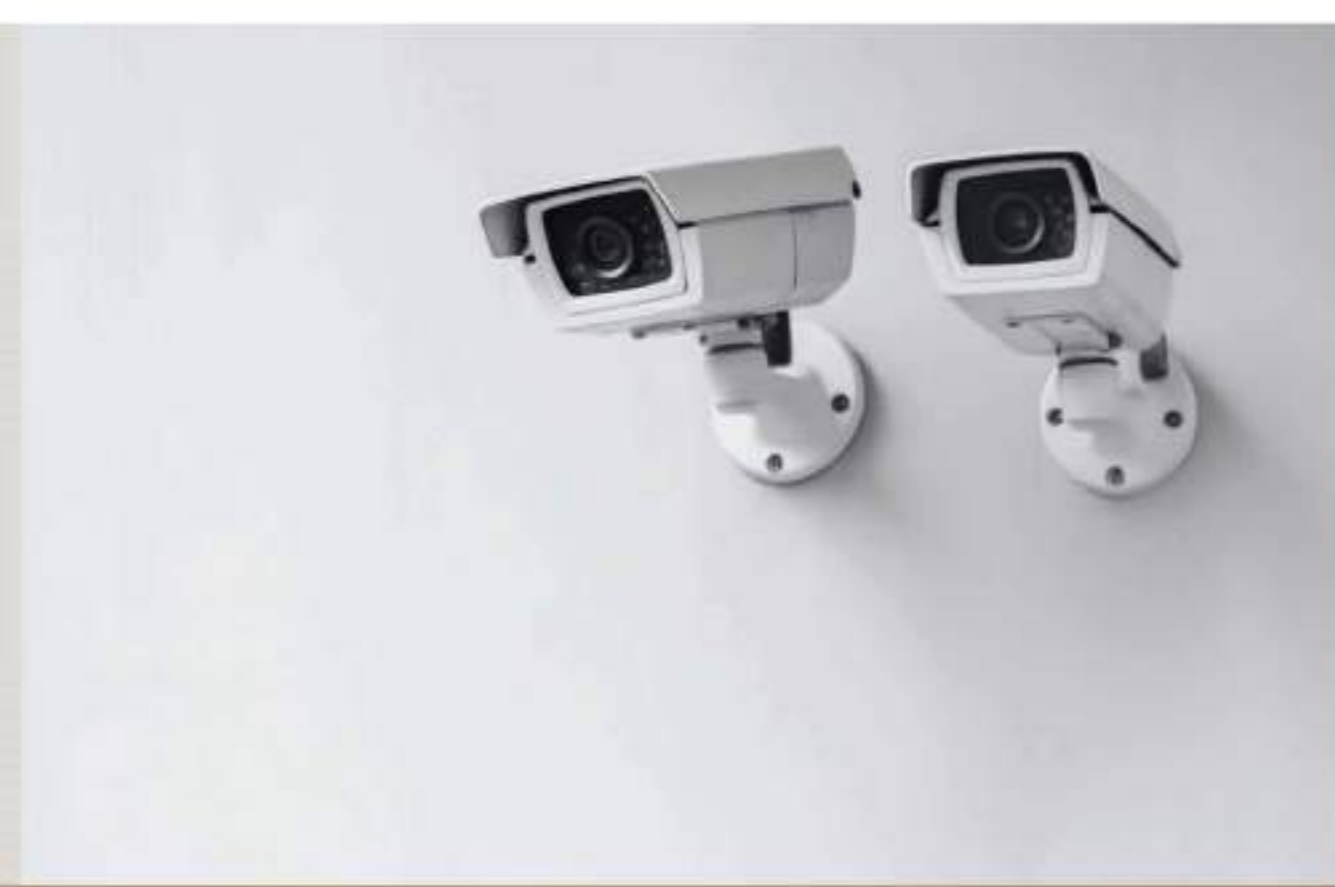


EVENTS HALL

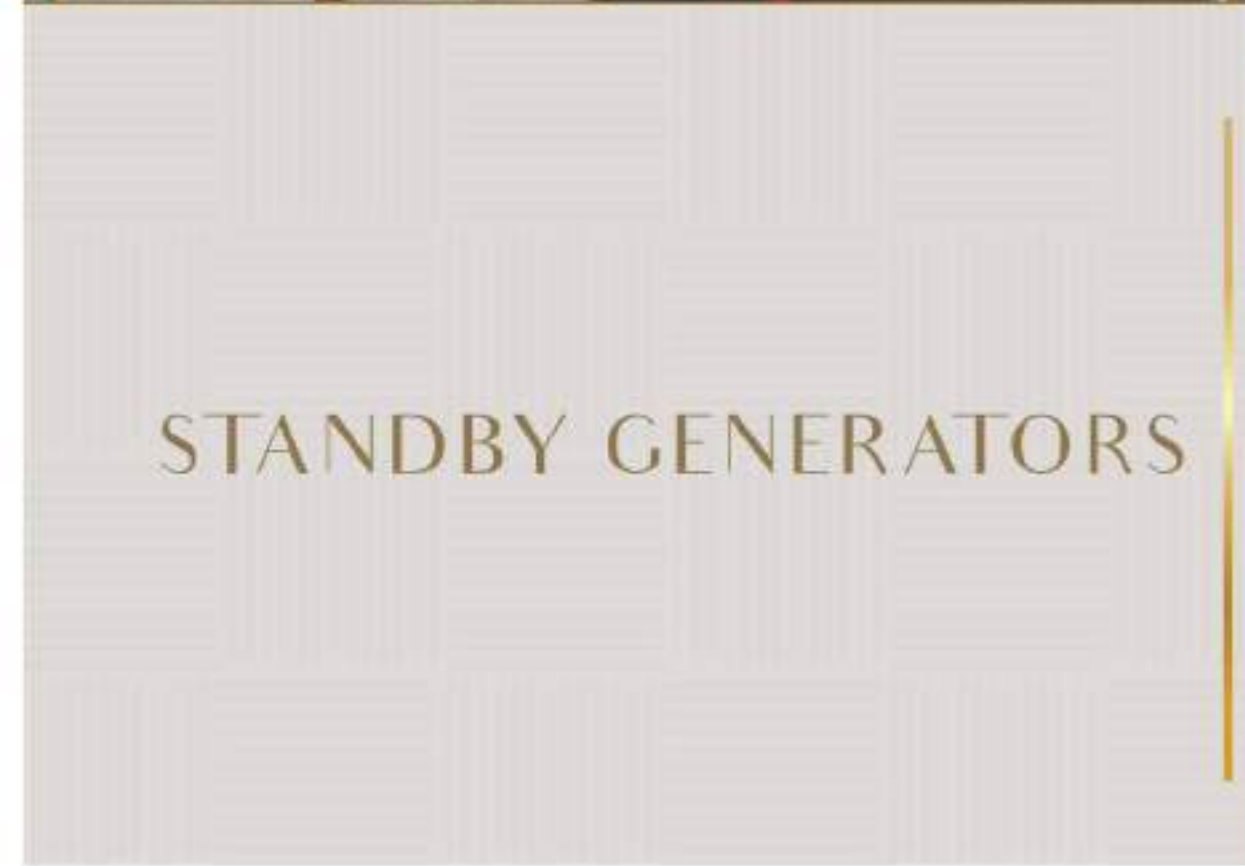
A versatile canvas for celebrations, meetings, and gatherings, offering ample space and flexibility to bring any occasion to life. With its customizable layout and modern amenities, it provides a perfect setting to create unforgettable moments and host a wide range of events.



FIRE FIGHTING SYSTEM



CCTV SURVEILLANCE



STANDBY GENERATORS



SPACIOUS PARKING



FLOOR PLANS & APARTMENT LAYOUT





5 BED LIVING
2700 sqft (Including Services)



Unit Type - A



5 BED DD
3050 sqft (Including Services)



Unit Type - A+



4 BED DD
2770 sqft (Including Services)



Unit Type - A1



4 BED LIVING
2130 sqft (Including Services)



Unit Type - B

THE SOLE SANCTUARY THAT FULFILLS YOUR
MOST ELEVATED DESIRES.





CI CALACHI ICON

We extend our heartfelt gratitude to all our esteemed partners for their unwavering dedication in bringing this vision to life. We also extend special thanks to our valued customers, who have entrusted us with making Calachi Icon their cherished home.

An unparalleled haven is exclusively crafted, by you and for you, tailored to your unparalleled taste.



0311-1199908

Booking Office: PROPERTY POINT Shop No 9 Dada Garden Jamal-ud-din Afghani Road, Near T.V. Station, Sharfabad Signal, Karachi.