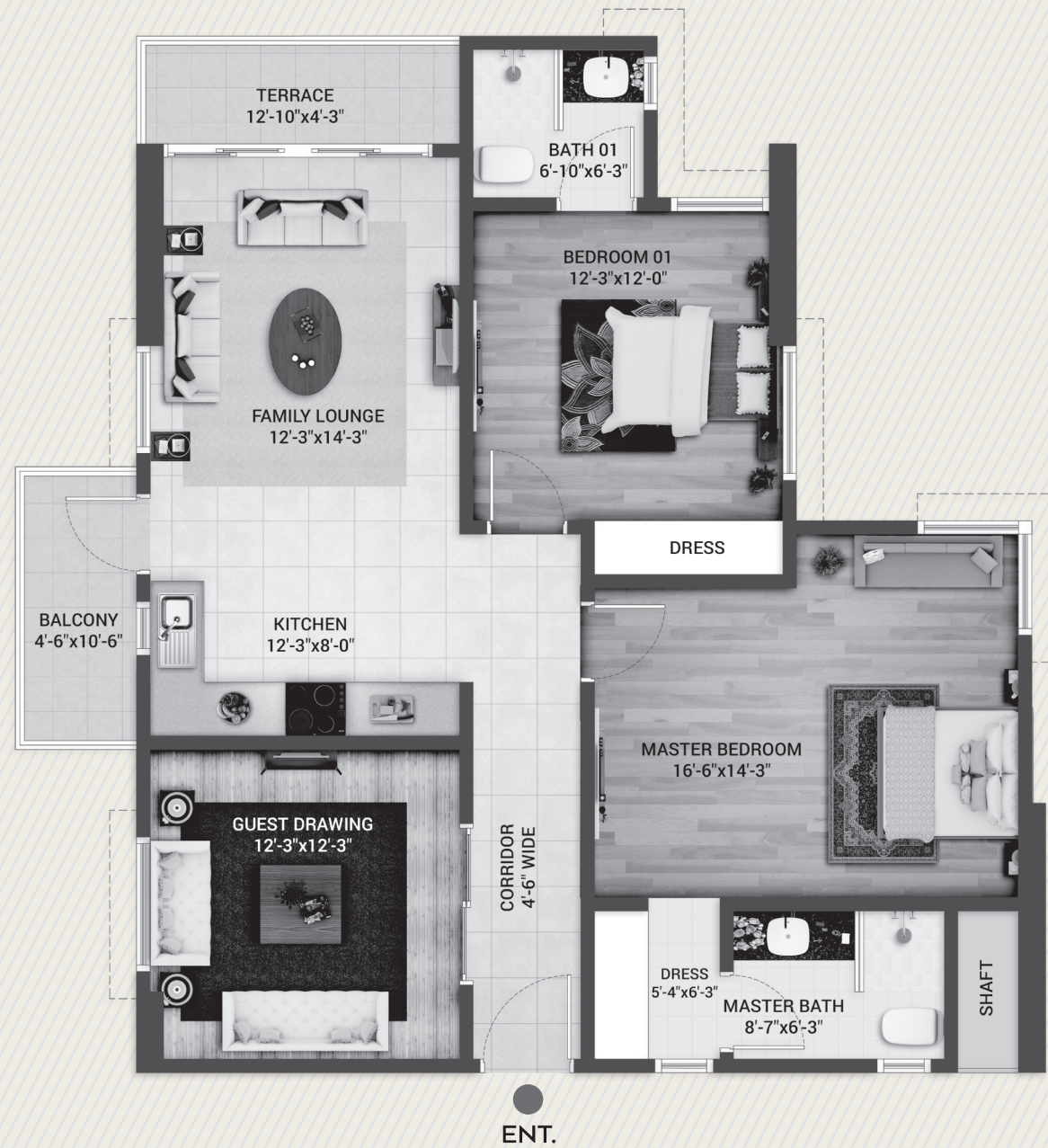


# SILVER

## 2- BEDROOM APARTMENTS



Net Area =	1132.00 Sq. Fts
Circulation & Amenities =	300.00 Sq. Fts
Parking Area (1) =	458.00 Sq. Fts
<b>Total Area =</b>	<b>1890.00 Sq. Fts</b>

All materials, dimensions and drawings are approximate only;  
Information is subject to change without notice, at developers absolute discretion.

## SILVER PAYMENT PLAN

MODE OF PAYMENT	AMOUNT
ON BOOKING	6,226,000
CONFIRMATION 45 DAYS	3,113,000
ALLOCATION 75 DAYS	3,113,000
24 MONTHLY INSTALLMENTS (24 X 363,183)	8,716,400
ON POSSESSION	3,735,600
<b>TOTAL AMOUNT</b>	<b>24,904,000</b>

**EXTRA CHARGES:** West Open: Rs. 500,000 Corner: Rs. 500,000

**OPTIONAL:** Servent Quarter: Rs. 600,000

### TERMS & CONDITIONS

- All installments must be paid by the allottee strictly as per schedule agreed by the allottee, from 1<sup>st</sup> to 10<sup>th</sup> of each month and the allottee shall abide by the terms and conditions of the booking application form.
- All the extra charges are payable within 120 days of booking.
- The allocation of unit shall remain provisional until the company receives full and final payment.
- The price of unit does not include sales tax, government levies, ground rent, sub-lease/sales deed execution charges, documentation charges, outer development charges, connection and meter charges / deposit of electricity, gas water & sewerage charges. Such charges / expenses including any miscellaneous expenses which may be incurred by the company in fulfilling the formalities of various departments shall be paid by the allottee in cash when demanded by the company.
- The price of unit does not includes car parking which will be charged at the time of possession.
- 10% discount on full cash payment at the time of booking.
- All discount will be valid, subject to regular payment and submission of application at the time of possession.
- The terms & conditions given in the "Application Form" are the essence of this payment schedule and the buyer undertakes to abide by the same.
- Transfer fees will be charged in case of transfer.

Name: \_\_\_\_\_

Read, Understood & Accepted

Apartment No.: \_\_\_\_\_

Floor: \_\_\_\_\_ Block: \_\_\_\_\_

Total Cost: \_\_\_\_\_ Date: \_\_\_\_\_

Signature

